



# PRODUCT SPECIFICATIONS

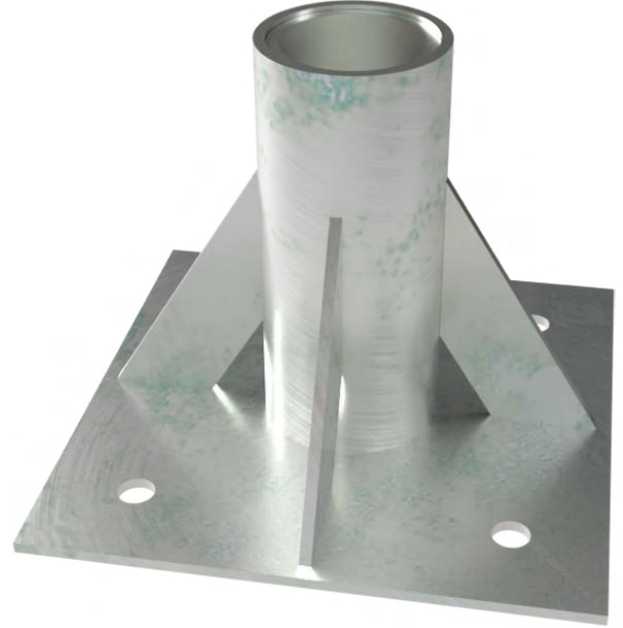
## PD7 Floor Mount Sleeve Davit Base

### Product Description

FrenchCreek's portable Davit System is used to raise, lower, and suspend personnel performing routine work duties or to facilitate rescues in vertical confined space applications such as vaults, manholes, and pump stations.

### Product Features

- Bolt on design for existing steel and concrete installation
- Ideally suited for recurrent access locations
- 9" deep sleeve with PVC insert
- User-supplied fasteners required for installation
- 360° mast rotation



### MATERIAL SPECIFICATIONS

<b>Davit Base</b>	Zinc plated carbon steel
<b>Sleeve Insert</b>	PVC pipe
<b>Weight</b>	32 Lbs.
<b>Dimensions</b>	12" x 12" x 9.5"

### PERFORMANCE SPECIFICATIONS

<b>Capacity</b>	450lbs (205kg) at minimum 2:1 safety factor

### RELEVANT STANDARDS

<b>OSHA</b>	1926.502 and 1910.66 when used in a complete system

### SIZES/LENGTHS

--	--

### Notes

Compatible with PD1 Davit Mast Assembly

