

Floor Mount Sleeve Base- 9" Tall Sleeve Insert

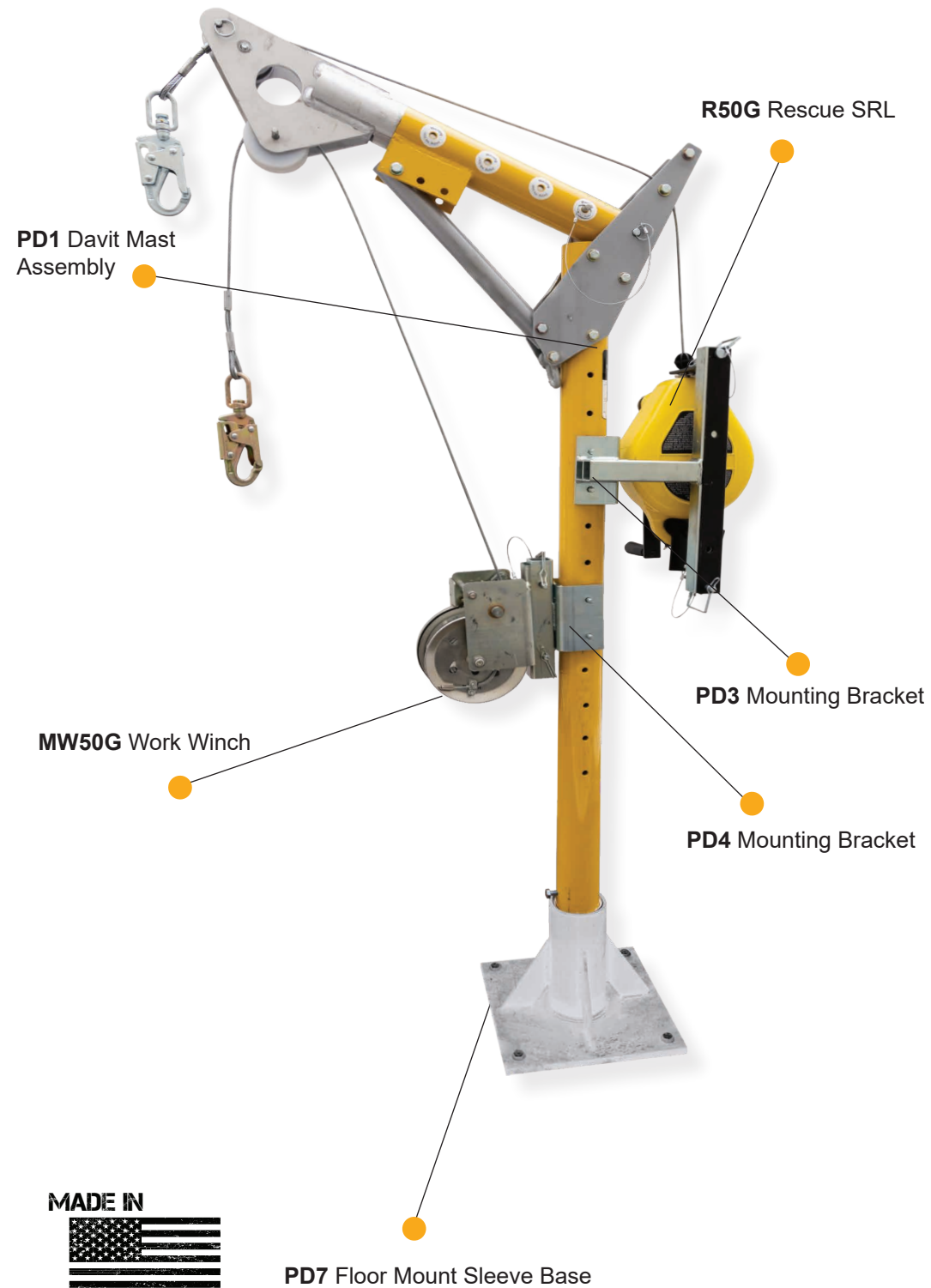
Designed for confined space entry and rescue when recurring access is needed for concrete or structural steel.

Specs

- Weight Capacity- 130-310 lbs. ANSI
- Capacity- 1 entrant only, 310 lb. max
- Item weight- 136.75 lbs.
- Hardware Material- Powder coated aluminum, plated alloy steel
- Lifeline- Galvanized steel wire rope
- Standards- OSHA 1926.502
ANSI 1910.66

Components

- PD1- Davit Mast Assembly
- PD7- Floor Mount Sleeve Base
- PD3- R50G Mounting Bracket
- PD4- MW50G Mounting Bracket
- R50G- Rescue SRL
- MW50G- Work Winch



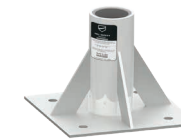
Ordering Information

PD1 Davit Mast Assembly
12"-30" offset reach



PD1
Davit mast assembly with telescoping adjustability from 12"-30". Includes attachment points for mechanical units. Used in conjunction with FrenchCreek Portable Davit system bases. Item weight 32.75 lbs.

PD7 Floor Mount Sleeve Base
9" Deep Sleeve Insert



PD7
Bolt on design for existing steel and concrete installation. Allows for 360° rotation of PD1 Davit Mast Assembly. 9" tall sleeve with PVC insert. Item weight: 32 lbs.

PD3 Mounting Bracket
Attaches R50G Rescue SRL



PD3
Used to attach R50G Rescue SRL to PD1 Davit Mast Assembly. Attaches with locking pins. Material: plated alloy steel. Item weight: 7.2 lbs.

PD4 Mounting Bracket
Attaches MW50G Work Winch



PD4
Used to attach MW50G Work Winch to PD1 Davit Mast Assembly. Attaches with locking pins. Material: plated alloy steel. Item weight: 4.8 lbs.

R50G Rescue SRL
ANSI Class SRL-R
3-way unit, 50' length



R50G
50' rescue SRL with raising/lowering capability. Mounts to PD1 Davit Mast Assembly using PD3 Mounting Bracket. Includes dual inertia braking system, pulleys & carabiner, load indicating snaphook. Three lifeline options: galvanized steel, stainless steel, technora rope. Aluminum cast housing. Item weight: 35 lbs.

MW50G Work Winch
50' length



MW50G
Offers raising and lowering capabilities with a friction brake that prevents the unit from free-wheeling when under a load. Mounts to PD1 Davit Mast Assembly using PD4 Mounting Bracket. Includes pulleys, carabiner and swivel snaphook. Three lifeline options: galvanized steel, stainless steel, technora rope. Aluminum cast housing. Item weight: 25 lbs.