



Precise surveying and measuring



Industrial line

Special Tripod for Laser Scanners



Industrial line tripods





industrial line 

Special Tripod for Laser Scanners

Unlike rotating lasers which are set up once a day and which remain unchanged in that position all day long, laser scanners require elevating tripods that allow to easily lift and lower heavy-duty laser scanners continuously. When working with laser scanners, elevating tripods have to cope with a higher load applied which results in more wear and tear especially in the gear unit. Industrial Line is a new series of tripods perfectly adjusted to meet the special requirements of laser scanners or heavy-duty instruments.

Features:

- Indirect gear to easily lift and lower heavy instruments
- Reinforced gear unit for extra durability and less wear and tear
- Twist proof elevating column with centric clamp
- Tripod legs made of strong aluminium profiles and leg struts for extra stability
- Combi shoes for all terrain use



industrial line 

Elevating Tripod for Laser Scanners

Tripod Ref.-No. 210 700

- Min. effective height approx. 1.05 m
- Max. effective height approx. 2.76 m
- Retracted length approx. 1.28 m
- Weight approx. 9.2 kg
- Holding screw: 5/8" thread
- Tripod plat, Ø 110 mm
- Tripod head and joints made of aluminium
- Adjustable column range 818 mm
- mm graduation on telescopic tube

Tripod bag for Industrial Line Tripod 210710

Length: 1350 mm
Ø: 250 mm

Ref.-No. 655 115-613



Circular level for simple alignment, even with an extended tripod



industrial line

Two Way Tripod

The Nedo Industrial Line Two Way Tripod for shaft applications permits very flexible application of 3D laser scanners because they can be used both above and below the tripod.

The intelligent tripod design allows users to mount a 3D laser scanner on the top plate of the tripod or to invert the elevating column and mount the instrument upside down below the tripod. The toothed column can be extended to almost any length, permitting a 3D laser scanner to be lowered by as much as 4 m into a shaft compartment. Additional rack elements are inserted into the elevating head and securely connected to the previously inserted rack element with the aid of an innovative locking device. The tripod comes as standard with four additional rack elements, each 1 m long.

For greater convenience the crank can be replaced by a screwdriver bit and the 3D laser scanner can be lifted to the desired height with a cordless screwdriver.



Scope of delivery:

Two way elevating tripod incl. basic gear column, 4 rack elements 1 m each in a carrying bag, 5 mm allen key, magnetic bit holder for cordless screwdriver, hand crank with magnetic bit holder, combi tripod feet and tripod adapter 3/8"

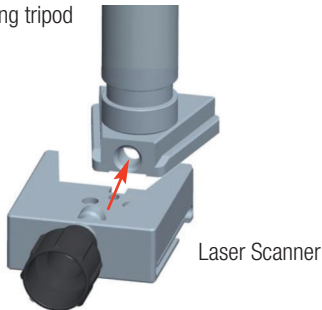
Tripod Ref.-No. 210 710

- Min. effective height approx. 1.12 m
- Max. effective height approx. 5.00 m
- Depth of shaft approx. 4.00 m
- Retracted length approx. 1.21 m
- Holding screw: 5/8" thread
- Tripod adapter: 3/8" thread
- Weight approx. 8.9 kg
- Tripod plate flat, Ø 110 mm
- Tripod head and joints made of aluminium
- Use of the laser scanner above and below the elevating tripod
- mm graduation on telescopic tube
- Twist proof elevating column with centric clamp
- Suitable for shafts with a diameter of 205 cm

Accessories for Industrial Line Two Way Tripod



Elevating tripod



Adapters for Laser Scanners

Depending on the weight, overhead mounting of a 3D laser scanner on a two way tripod with a 5/8" socket may be difficult. To make this easier, adapters can be supplied as optional accessories for various laser scanners. They permit safe and easy attachment to the tripod.

Nedo Adapters for Laser Scanners

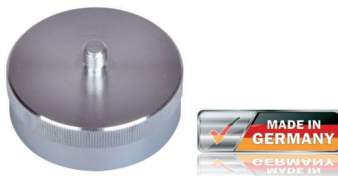
Ref.-No.	
660 040	Adapter for Faro Focus 3D S series and M series
660 041	Adapter for Leica HDS6200, HDS6100 and HDS7000 as well as Zoller and Fröhlich Imager 5010
660 042	Adapter for Leica Scanstation P20, P30 and P40 as well as Zoller and Fröhlich Imager 5016
660 043	Adapter for TRIMBLE TX8

Tripod Dolly

Sturdy tripod dolly with large steerable and lockable wheels. The points of the tripod are placed in the recesses provided and the feet are secured with a flexible strap. Easy, safe and convenient.

The tripod dolly has only two shanks, allowing it to be maneuvered through narrow doors and providing easy access to a laser scanner. For shaft applications the shaft diameter shall not exceed 95 cm. The dolly can be folded up to save space in transport.

Ref.-No. 660 030



3/8" Tripod Adapter

Tripod adapter made of metal.

Order information:

- Ref.-No. 061 837 Adapter for 5/8" thread to 3/8" thread (suitable for Faro Focus 3D, Leica BLK 360 and Trimble TX5)



Extension Column

Extra extension column, 1m for Nedo two way tripod
Ref.-No. 210 710.

Ref.-No. 660 020



Prisms-Adapter

Adapter with Leica tip
For attachment of a Leica-compatible prism Perfect for quick calibration of a 3D scanner using a total station.

Ref.-No. 660 050



Nedo GmbH & Co. KG

Hochgerichtstrasse 39-43
D-72280 Dornstetten
Tel. +49 (0) 7443 24 01-0
Fax +49 (0) 7443 24 01-45

info@nedo.com
www.nedo.com

Your Nedo Dealer