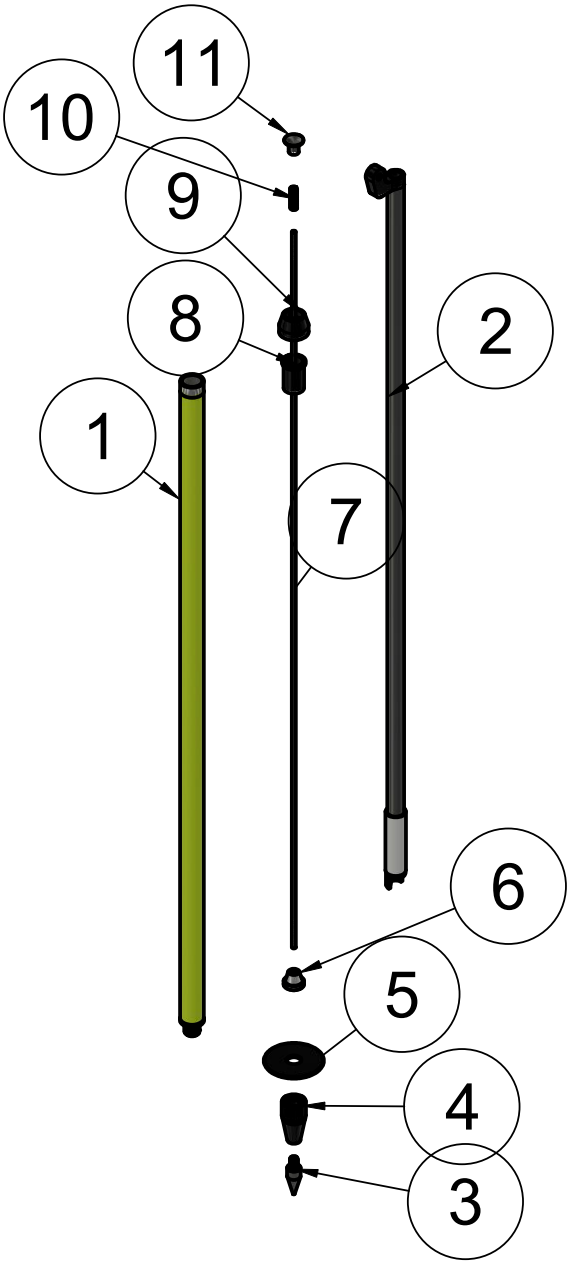


Dutch Hill
Bipod leg parts diagram



PARTS LIST			
ITEM	QTY	PART NUMBER	DESCRIPTION
1	1	BP-LEG-TUBE	Outer leg tube
2	1	BP-INNERTUBE	Inner leg assy.
3	1	BP-FOOT-POINT	Foot Point
4	1	BP-FOOT	Foot
5	1	BP-FOOT-PAD	Foot Pad
6	1	BP-TAPERED-STOP	Tapered stop
7	1	BP-THREADED-ROD	Threaded rod
8	1	BP-TUBE-GUIDE V2	Tube guide
9	1	BP-TUBE-TOP	Tube top
10	1	BP-BTN-SPRING	Button spring
11	1	BP-BUTTON	Button

*** add CF to part number for carbon fiber bipod parts