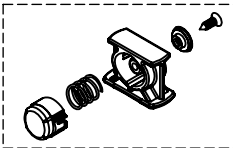
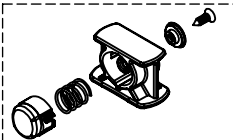


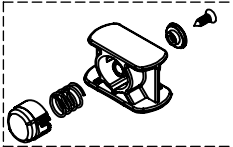
91240  
#1 SVR TIP CAP ASSEMBLY



91241  
#1 SVR LOCK ASSEMBLY



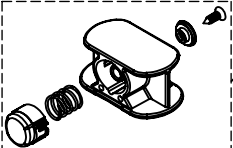
91242  
#2 SVR LOCK ASSEMBLY



91243  
#3 SVR LOCK ASSEMBLY



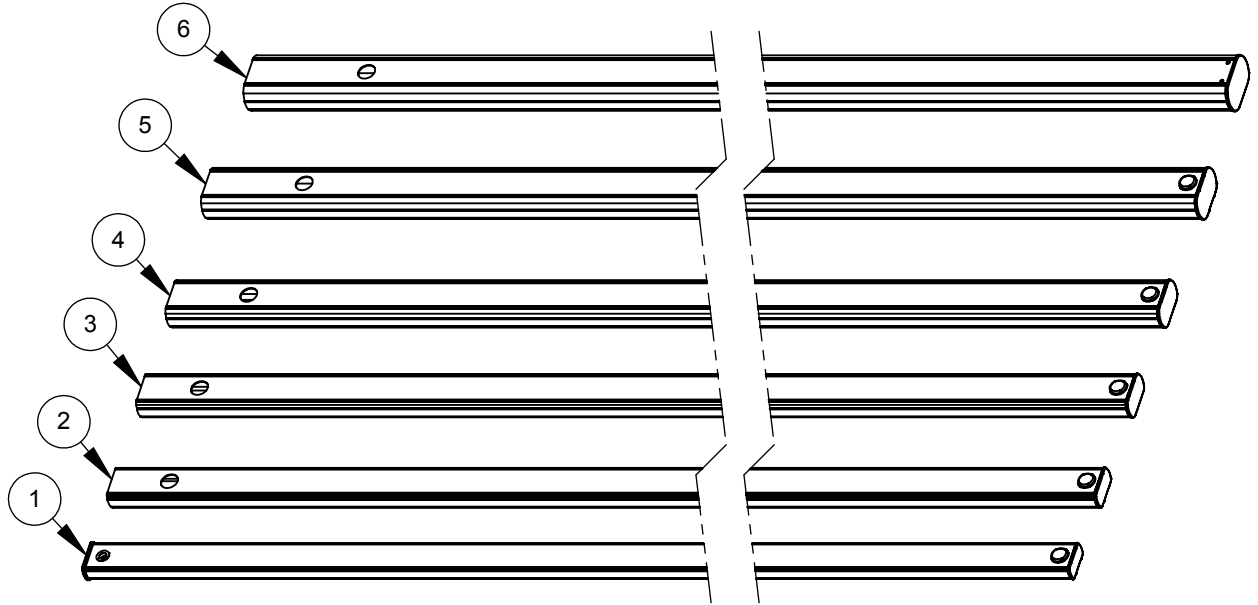
91244  
#4 SVR LOCK ASSEMBLY



91245  
#5 SVR LOCK ASSEMBLY



91246  
#6 SVR END CAP ASSEMBLY



(LOCK ASSEMBLIES ARE SUPPLIED WITH REPLACEMENT SECTIONS)



91247  
SET OF 5 SVR SPRINGS



91248  
SET OF 5 SVR BUTTONS



91249  
SVR STAINLESS STEEL SCREWS

91250  
SVR-7.6m COMPLETE LOCK SET

**\*NOTE**  
Components may be sold separately.  
Please see sub-assembly part number  
drawing for details.

ITEM NO.	PartNo	DESCRIPTION	QTY
1	98551	SVR-25'/7.6m 10ths/PHILLY METRIC #1 TOP SECTION (21'-25')	1
2	98552	SVR-25'/7.6m 10ths/PHILLY METRIC #2 SECTION (17'-21')	1
3	98553	SVR-25'/7.6m 10ths/PHILLY METRIC #3 SECTION (13'-17')	1
4	98554	SVR-25'/7.6m 10ths/PHILLY METRIC #4 SECTION (9'-13')	1
5	98555	SVR-25'/7.6m 10ths/PHILLY METRIC #5 SECTION (5'-9')	1
6	98556	SVR-25'/7.6m 10ths/PHILLY METRIC #6 BASE SECTION (0-5')	1

98016

SVR-25'/7.6m 10ths/PHILLY METRIC

DATE: 7/15/2010  
REV. A PAGE 1 OF 1



4155 OASIS ROAD  
REDDING, CA 96003